

Carrera de Orientación **TROFEO "CIUDAD DE YECLA"**

1ª Liga del Sureste de Orientación a Pie
3ª Liga Regional Murciana de O-Pie
1ª Liga Autonómica Comunidad Valenciana
2ª Liga Escolar de Invierno FORM

Temporada
2023



LIGA DEL

SURESTE

Fuente
el
Álamo



**12
Febrero
2023**

Información e inscripciones:
www.orientacionmurciana.com
(control200)



AYUNTAMIENTO
DE YECLA
DEPORTES



PRESIDENCIA
TURISMO
CULTURA
DEPORTES
REGIÓN DE MURCIA



REGIÓN
DE MURCIA
2023

Capital mundial de
los deportes de aguas



LIGA DEL SURESTE



Final Bulletin

“Ciudad de Yecla” Trophy

Foot Orienteering Race

February 12, 2023

Included in the Liga del Sureste, Lorca-O club, with the support of FORM and the Yecla City Council, organizes the first scoring race on foot for the 2023 season. This Race is also scoring for the 2023 Liga Regional Murciana, for the 2023 Liga Autonómica de la Comunidad Valenciana and for the FORM Liga Escolar de Invierno.

The Trophy will take place in the municipality of Yecla, on the Fuente el Álamo map (Costa Cálida 2020).

The organization invites you to enjoy a dynamic and fun race, in an ideal terrain for orientation.

GENERAL INFORMATION

Registration: There are two registration deadlines.

The first deadline (without surcharge) ends on Wednesday, February 8 at 23:59 h.

The second deadline (with surcharge and subject to the availability of Start times and vacant maps) ends on Saturday, February 11 at 12:00 h.

(*) For the participants in the School League, the registration period ends on Wednesday, February 8 at 23:59.

Registrations will be made at the address: control200.com

Note: Those clubs that wish to make the payment of the registrations by bank transfer must request it by email to: clublorcao@gmail.com

Start Times:

-10:00h to 12:00h - Official and Open categories.

-10:00 – Liga Escolar

-10:30h – Guided tour. For newcomers in the sport of orienteering there will be a tour that will have the support of a monitor who will explain how to follow a route with the help of the map, accompanying those who want to participate.

Finish line closing: 13:45 h.

Awards Ceremony:

-13:30h. The awards ceremony for the Ciudad de Yecla Trophy and the first three classifieds of the Southeast League 2022 will be held.

() At the end of the awards ceremony, a raffle for a ham and sport equipment will be held among the attendees.*

Provisioning:

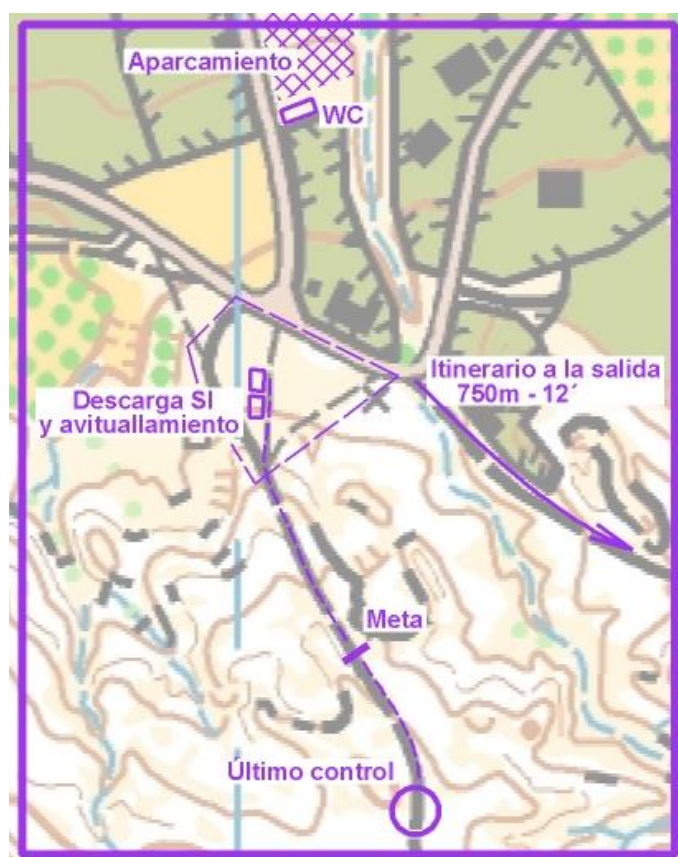
There will be liquid (water) and solid (fruit) supplies at the end of the test. With the aim of reducing the use of plastic, the water will be available in large jugs, so each participant who wants to dispose of it must bring a container (bottle, glass or similar).

There will be no provisioning during the race.

Access:

Access to Competition Center and the car park will be via N-344.
The parking coordinates are: [38.59566 / -1.15213 \(Google maps\)](#).

The car park is located 100-300 meters from the event center and the exit is 850 meters (12 minutes walk) from the latter. The itinerary will be signposted.



TECHNICAL INFORMATION

Event type: Intermediate.

Course Setter: José Antonio García Murcia.

| Trofeo “Ciudad de Yecla” FUENTE EL ÁLAMO – Yecla (12-02-2023) | | | | |
|--|---|-----------------------------------|-------------------------------|--|
| CATEGORÍA CATEGORY | Distancia Distance (km.) | Desnivel Cimb (m.) | Controles Controls | Escala - Equidistancia Escale - Contour |
| E-BENJAMIN | 1,6 | 25 | 7 | 1:7.500 – 5m. |
| E-ALEVÍN | 1,8 | 30 | 8 | 1:7.500 – 5m. |
| E-INFANTIL | 2,0 | 35 | 9 | 1:7.500 – 5m. |
| RUTA GUIADA | 2,0 | 40 | 9 | 1:7.500 – 5m. |
| OPEN-AMARILLO | 2,0 | 40 | 9 | 1:7.500 – 5m. |
| OPEN-NARANJA | 2,7 | 70 | 10 | 1:7.500 – 5m. |
| OPEN-ROJO | 4,6 | 170 | 17 | 1:10.000 – 5m. |
| F-12 | 2,3 | 45 | 9 | 1:7.500 – 5m. |
| F-14 | 3,0 | 70 | 11 | 1:10.000 – 5m. |
| F-16 | 3,1 | 95 | 13 | 1:10.000 – 5m. |
| F-18 | 3,5 | 110 | 15 | 1:10.000 – 5m. |
| F-21B | 3,1 | 95 | 13 | 1:10.000 – 5m. |
| F-21A | 4,2 | 150 | 16 | 1:10.000 – 5m. |
| F-ÉLITE | 5,5 | 210 | 21 | 1:10.000 – 5m. |
| F-35 | 4,0 | 125 | 16 | 1:10.000 – 5m. |
| F-45 | 3,5 | 110 | 15 | 1:10.000 – 5m. |
| F-55 | 2,9 | 75 | 13 | 1:7.500 – 5m. |
| F-65 | 2,9 | 75 | 13 | 1:7.500 – 5m. |
| M-12 | 2,3 | 45 | 9 | 1:7.500 – 5m. |
| M-14 | 3,0 | 75 | 12 | 1:10.000 – 5m. |
| M-16 | 3,7 | 120 | 14 | 1:10.000 – 5m. |
| M-18 | 4,6 | 170 | 17 | 1:10.000 – 5m. |
| M-21B | 3,7 | 115 | 14 | 1:10.000 – 5m. |
| M-21A | 5,5 | 210 | 21 | 1:10.000 – 5m. |
| M-ÉLITE | 7,3 | 285 | 25 | 1:10.000 – 5m. |
| M-35 | 5,5 | 205 | 21 | 1:10.000 – 5m. |
| M-45 | 4,6 | 175 | 17 | 1:10.000 – 5m. |
| M-55 | 4,0 | 130 | 15 | 1:7.500 – 5m. |
| M-65 | 3,6 | 110 | 15 | 1:7.500 – 5m. |

M-ELITE category course is divided into two parts, with the first part printed on one side of the map and the second part of the course on the back.

The area is regularly used by motorcycles and bicycles, which has led to a large number of tracks on the ground. Only the most marked ones are reflected on the map using the symbol 508.0 (narrow path)

It is recommended to pay special attention and check the numbers that identify the controls.

Remember that it is mandatory to download the race data once the course is over, even if the route has not been completed.

Results: live results at: <https://liveresultat.orientering.se>

Terrain Description:

The terrain chosen for this trophy presents ideal characteristics for orienteering, open areas alternate with forest areas with a moderate to gentle slope.

The influence of man has been decisive, which has given rise to a large number of details originated by mining activity (already abandoned) such as small depressions, troughs, holes, cuts, etc.

The ground is soft resulting pleasant to the step on, this together with the little amount of vegetation allows a high running speed.

There is an extensive network of paths and trails in the area covered by the map.

The race has been designed to let the runner the use of all his abilities on it, applying different orientation techniques.

The races are made up of varied sections with frequent changes of direction in which there is no lack of sections of choice of route. This together with the technical difficulty of the terrain will make concentration during the test a determining factor in order not to make mistakes.

Map:

FUENTE EL ÁLAMO (Yecla)

FEDO registration number: MU-2540-20

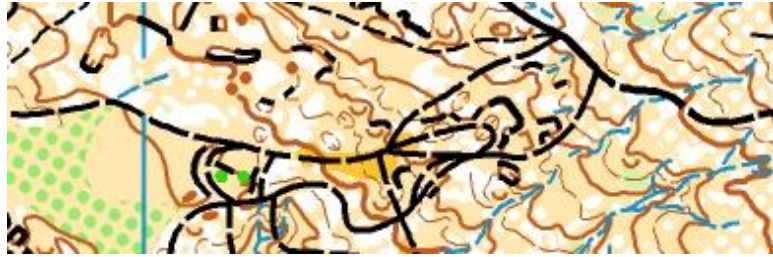
Scale: 1:10,000 – **Equidistance:** 5 m. (ISOM 2017-2)

Field work: November 2019 by **Juan Fco. Sánchez Sánchez.**

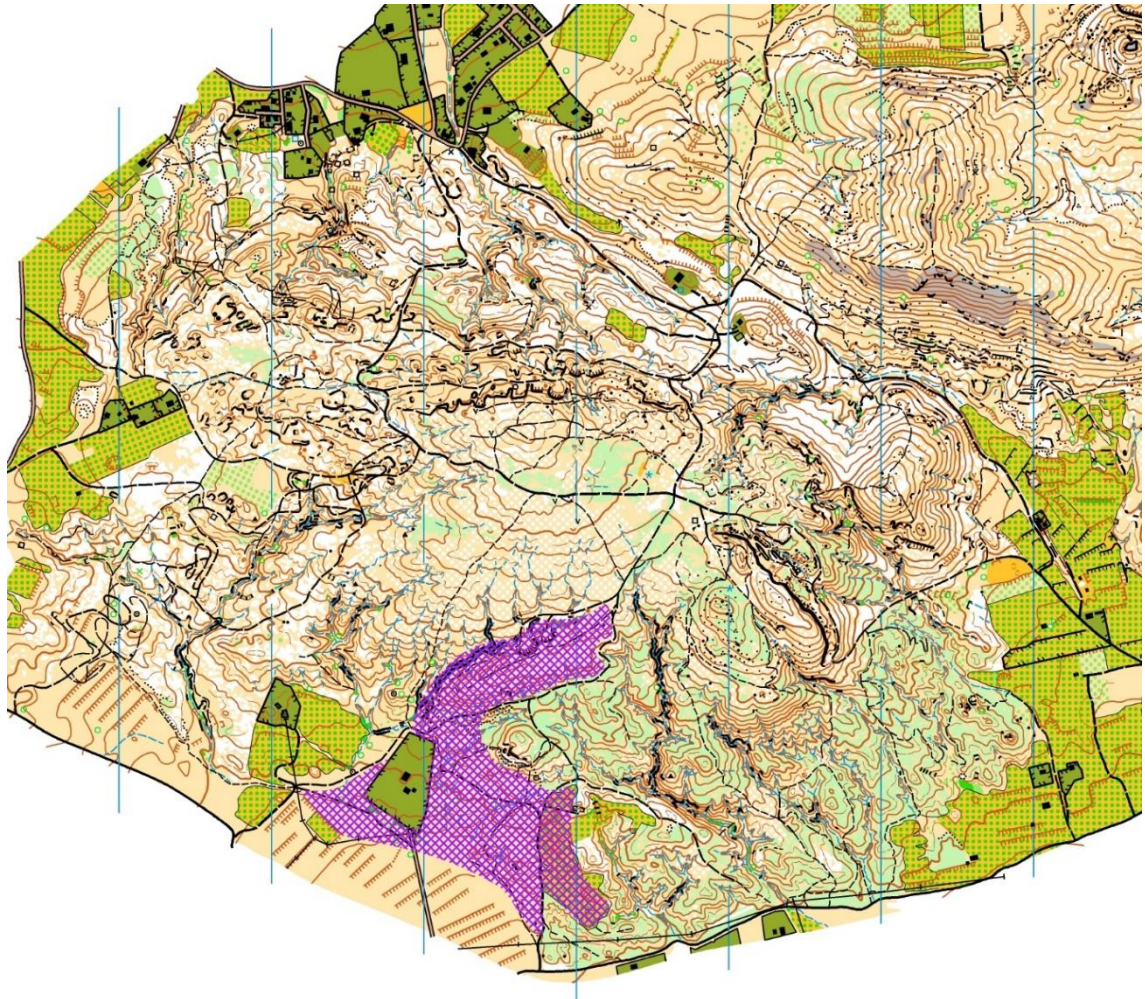
Review: January 2023 by **José Antonio García Murcia.**

Terrain Description:

Located between 640-730 m. altitude. Typical Mediterranean terrain, based on young replanted pine combined with open or semi-open areas. It allows a good running speed on most of the map. It offers a very interesting relief with a large number of elements. The effect of old mining works has created a "broken" soil with numerous inflections such as depressions, cuts and small quarries. The terrain is ideal for orienteering, both for Intermediate and Long Distance.



Previous Map:



Terrain Photos:









